

# TECHNICAL DATA SHEET

## All-in-One Single Wall Exhaust

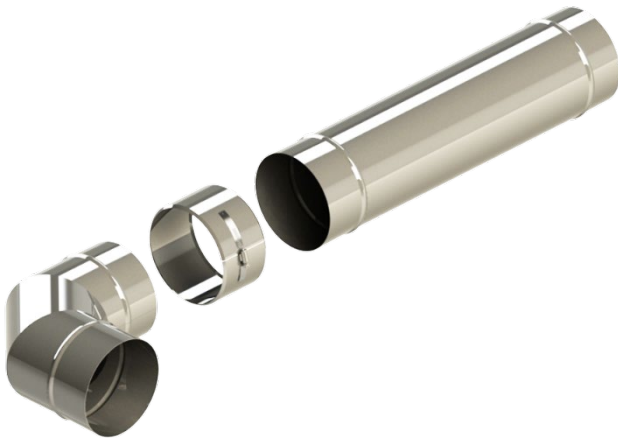
### SWKL-Vt

#### PRODUCT LINE

SWKL-Vt - All-in-One Single Wall Exhaust

#### APPLICATIONS

- Stainless steel all-in-one chimney, vent, or exhaust system for condensing boilers or those that use high temperatures not exceeding 1400°F continuous (1000°F per UL-103 Listing)
- For connecting heating appliances and engines to the outdoors under negative or positive pressure
- Applicable for all fuels: gas, oil, wood, and any other solid fuels.



#### PURPOSE

- Factory built to eliminate welding in the field
- Assurance of finest quality and reliability

#### UL and ULC LISTINGS

1. UL-103 Standard, Building Heating Appliance Chimney (Industrial Type 540°C Chimney)
2. UL-103 & UL-2561 Standards, Additional Positive Pressure Listing to 90" WC after 1400°F
3. UL-1978 Standard, Grease Duct (ULC-S662 Standard for Factory-Built Grease Ducts)
4. UL-1738 Standard, Venting Systems for Gas-Burning Appliances, Categories II, III & IV (ULC-S636 Standard for Type BH Gas Venting Systems)
5. UL-1777 Standard, Chimney Liners (ULC-S605 Standard for Lining Systems for Chimneys)

#### MATERIALS

- Inner liner made of high-grade, 0.020" thick, 444 or 316L stainless steel
- All supports and accessories are stainless steel

#### CONNECTION/INSTALLATION DETAILS

- Conical 2.2" overlapping joint
- Requires tapping to fully engage
- Use KL-Paste, a ceramic and mineral oil-based manufacturing paste, to help facilitate an easy engagement
- Does not use silicone or sealant to make the high-pressure seal

#### FEATURES

- All-stainless with a Limited Lifetime Warranty
- Leak Proof conical high-pressure joints
- Cut length available for maximum field flexibility
- Smooth flow and known resistance for perfected factory pressure calculations



# TECHNICAL DATA SHEET

All-in-One Single Wall Exhaust



## SWKL-Vt



### PRODUCT LINE

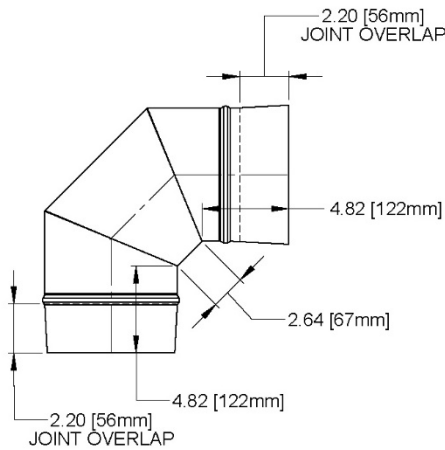
SWKL-Vt - All-in-One Single Wall Exhaust

### SPECIFICATIONS

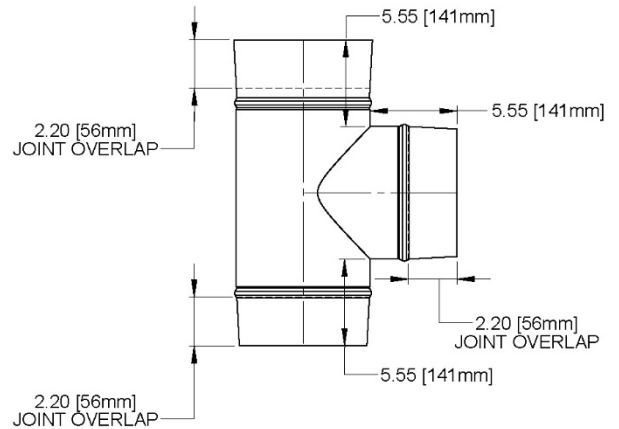
<b>Diameters</b>	3", 4", 5", 6", 7", 8", 9", 10", 11", 12", 13", 14", & 16" (larger diameters can be special ordered)
<b>Available Lengths</b>	6", 9", 12", 18", 24", 30", 36", 42", & 48" (or any fixed length between)
<b>Available Fittings</b>	Any elbow or tee, over 80 catalog fittings per each diameter
<b>Available Accessories</b>	All-stainless supports, guides, hangers, adapters - over 25 accessories per each diameter

### CONTROLLING DIMENSIONS

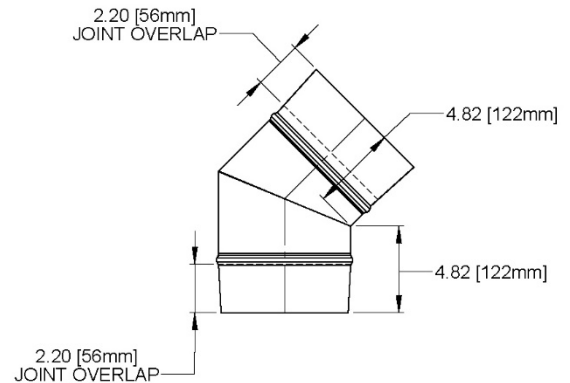
- Shows the minimum (and standard) inside gore dimensions for fittings
- Use these dimensions when ordering any special or custom part
- Jeremias encourages custom built items to provide the best solutions to our customers



**90° ELBOW**



**90° TEE**



**45° ELBOW**

