

Technical Data Sheet

SWGD-R Single Wall Rectangular Grease Duct

SWGD-R

Product Line

SWGD-R UL-1978 Single Wall Rectangular Grease Duct



Product Specifications

UL Listed Grease Duct for commercial kitchen ventilation systems.

Factory-built eliminates welding in the field.

Factory-built assurance of finest quality and reliability.

Rectangular configuration allows for alternative use of space in certain restrictive conditions.

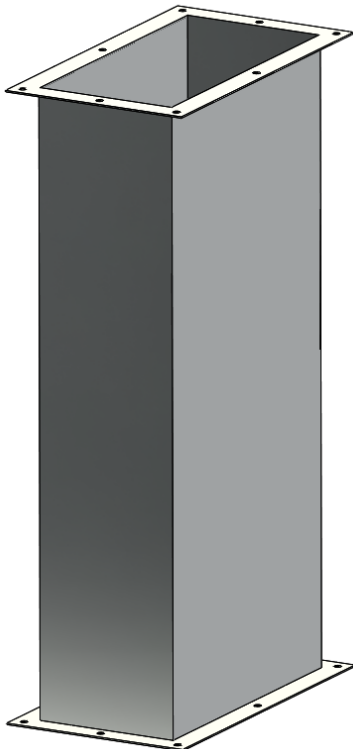
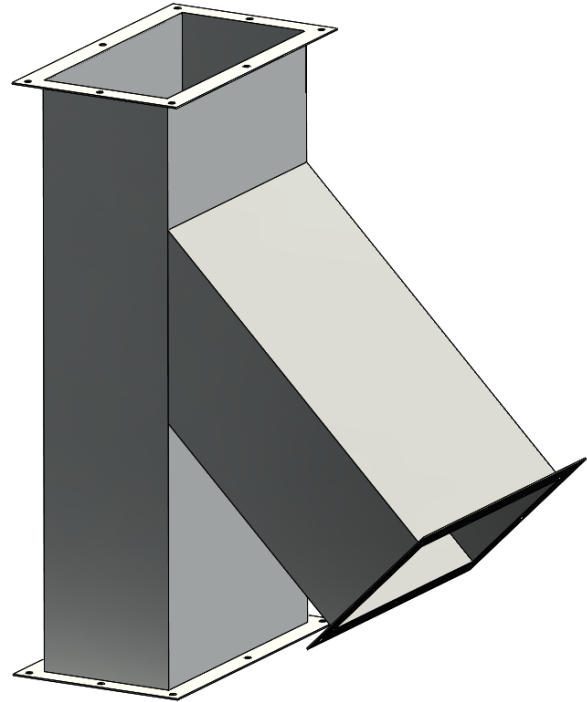
May be intermixed with Jeremias round Models (FL, GD, CK) or rectangular Model DWGD-RZ.

Applications

Stainless steel duct assembly for Kitchen Ventilation Systems.

UL Listings (and ULC)

- UL-1978 Standard for Factory-Built Grease Ducts
- ULC-S662 Standard for Factory-Built Grease Ducts



Materials

- Made of minimum 20 gauge (0.035") stainless steel
- 1" wide flange is minimum 12 gauge (0.109") stainless steel

Connection / Installation Details

The connection is a flange-to-flange bolted connection.

Supplied sealant is used on the flange to make seal.

Rectangular grease duct must be installed with a slope of 1/8 inch per foot of horizontal length if the length of the run is 75 feet or less. If the length of the horizontal run exceeds 75 feet, it must be installed at a slope of 1/4 inch per foot.

Features

Extremely rigid inner is made of all-stainless steel with Limited Ten-Year Warranty.

Liquid tight joints.

Smooth flow and known resistance for accurate factory pressure calculations.

No welding required at jobsites.

Technical Data Sheet

SWGD-R Single Wall Rectangular Grease Duct

SWGD-R

Product Line

SWGD-R UL-1978 Single Wall Rectangular Grease Duct

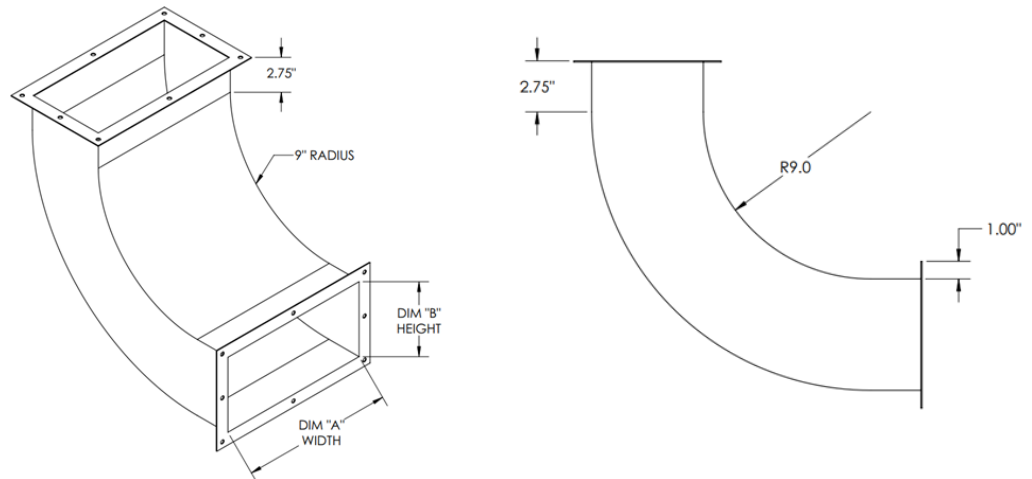


Rectangular Sizes	Widths/Heights- 6, 8, 10, 12, 14, 16, 18, 20, 22, 24, 26, 28, 30, 32, 34, 36, 38, 40, 42, 44, 46, 48 *See permissible dimensions below
Available Lengths	Standard sizes are 18", 30", 42" (or custom lengths)
Available Fittings	15°, 30°, and 45° elbows. 45° or 90° tees, wyes, fan and hood adapters; supports, wall brackets, floor and wall through penetrations, nozzle attachment fittings, access doors and panels, rectangular to round fittings, and attachments.
Available Accessories	All supports, guides, hangers, and adapters

Controlling Dimensions

9" radius inside of elbows, then 2.75" to flange

10" from inside gore to flange on tees



Permittable Dimensions

Model SWGD-R Grease Duct is available in either square or rectangular configurations. The maximum allowable width to height ratio is 6 to 1, for instance 36" x 6".

Square duct is available in sizes from 6" x 6" to 36" x 36". Rectangular duct is available in sizes from 6" x 8" to 27" x 48".

The chart below shows the weight and capacity of common duct sizes.

*Any combination of width and height from 6" to 48" is available provided the net inside area does not exceed 1296 square inches.

APPROXIMATE INSTALLED WEIGHT PER FOOT

DUCT INTERNAL AREA SQ IN (INSIDE DIMENSION)	POUNDS
36 (6"X6")	8
72 (6"X12")	12
108 (6"X18")	16
144 (6"X24")	19
216 (6"X36")	27
288 (12"X24")	23

DUCT INTERNAL AREA SQ IN (INSIDE DIMENSION)	POUNDS
432 (12"X36")	31
648 (18"X36")	35
864 (24"X36")	39
1088 (32"X34")	44
1296 (36"X36")	46
2304 (48"X48")	61