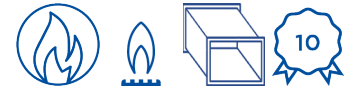


TECHNICAL DATA SHEET

Single Wall Rectangular Grease Duct

SWGDR



PRODUCT LINE

SWGDR - Single Wall Rectangular Grease Duct

PURPOSE

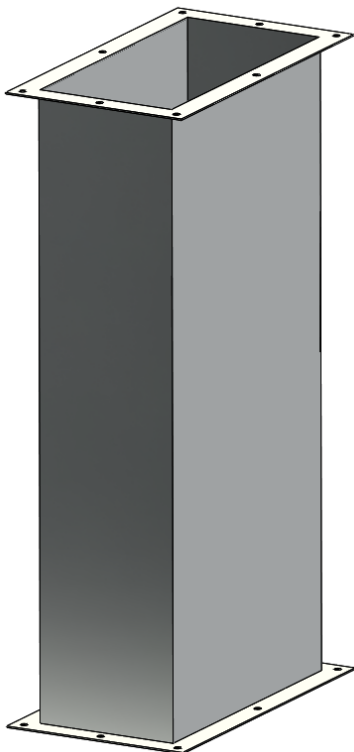
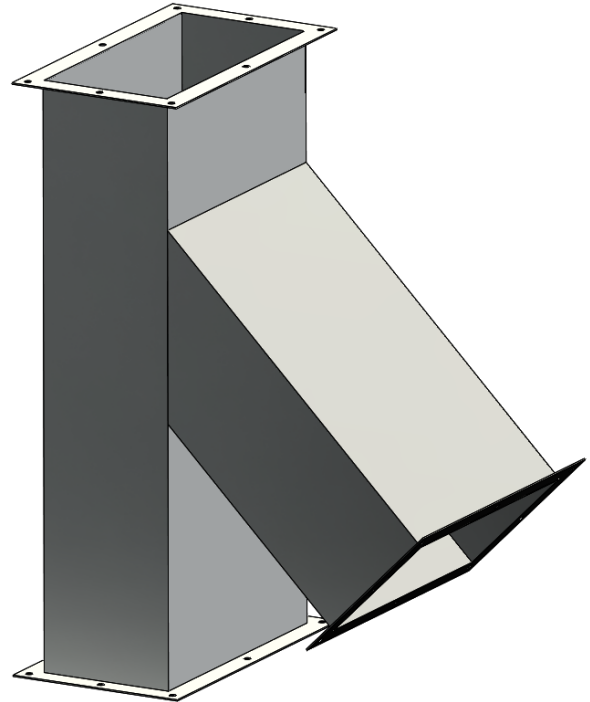
- UL Listed Grease Duct for commercial kitchen ventilation systems
- Factory-built duct eliminates welding in the field
- Factory-built assurance of finest quality and reliability
- Rectangular configuration allows for alternative use of space in certain restrictive conditions
- May be intermixed with Jeremias's round models (KL or CK) or rectangular model DWGD-RZ

APPLICATIONS

- Stainless steel duct assembly for Kitchen Ventilation Systems

UL AND ULC LISTINGS

1. UL-1978 Standard for Factory-Built Grease Ducts
2. ULC-S662 Standard for Factory-Built Grease Ductsw



MATERIALS

- Made of minimum 0.035" stainless steel
- 1" wide flange is minimum 0.109" stainless steel

CONNECTION/INSTALLATION DETAILS

- Connection is flange-to-flange bolted
- Supplied sealant is used on the flange to make a seal
- Rectangular grease duct must be installed with a slope of $\frac{1}{8}$ " per foot of horizontal length if the length of the run is 75' or less. If the length of the horizontal run exceeds 75', it must be installed at a slope of $\frac{1}{4}$ " per foot

FEATURES

- Extremely rigid inner is made of all stainless-steel with Limited 10-Year Warranty
- Liquid tight joints
- Smooth flow and known resistance for accurate factory pressure calculations
- No welding required at jobsites



TECHNICAL DATA SHEET

Single Wall Rectangular Grease Duct

SWG-D-R



PRODUCT LINE

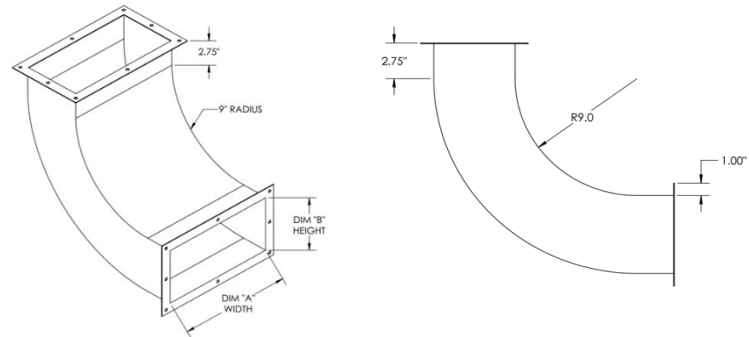
SWG-D-R - Single Wall Rectangular Grease Duct

SPECIFICATIONS

Rectangular Widths/Heights	6", 8", 10", 12", 14", 16", 18", 20", 22", 24", 26", 28", 30", 32", 34", 36", 38", 40", 42", 44", 46", & 48" *See permissible dimensions below
Available Lengths	Standard sizes are 18", 30", & 42" (or custom lengths)
Available Fittings	15°, 30°, & 45° elbows, 45° or 90° tees, wyes, fan and hood adapters, supports, wall brackets, flow and wall through penetrations, nozzle attachment fittings, access doors and panels, rectangular to round fittings and attachments
Available Accessories	All supports, guides, hangers, and adapters

CONTROLLING DIMENSIONS

- 9" radius inside of elbows, then 2 3/4" to flange
- 10" from inside gore to flange on tees



PERMITTABLE DIMENSIONS

Model SWGD-R Grease Duct is available in either square or rectangular configurations. The maximum allowable width to height ratio is 6 to 1, for instance 36" x 6". Square duct is available in sizes from 6" x 6" to 36" x 36". Rectangular duct is available in sizes from 6" x 8" to 27" x 48".

The chart below shows the weight and capacity of common duct sizes.

*Any combination of width and height from 6" to 48" is available provided the net inside area does not exceed 1296 square inches.

APPROXIMATE INSTALLED WEIGHT PER FOOT

DUCT INTERNAL AREA SQ IN (INSIDE DIMENSION)	POUNDS
36 (6"X6")	8
72 (6"X12")	12
108 (6"X18")	16
144 (6"X24")	19
216 (6"X36")	27
288 (12"X24")	23

DUCT INTERNAL AREA SQ IN (INSIDE DIMENSION)	POUNDS
432 (12"X36")	31
648 (18"X36")	35
864 (24"X36")	39
1088 (32"X34")	44
1296 (36"X36")	46
2304 (48"X48")	61

