

TECHNICAL DATA SHEET

Single Wall Commercial Exhaust

SWCK-C

PRODUCT LINE

SWCK - Single Wall Commercial Exhaust

APPLICATIONS

- Stainless steel duct for connecting cooking appliances, kitchen hoods, and dishwasher exhausts to the outdoors under negative or positive pressure
- A true replacement for field welded black steel
- Design eliminates welding and time-consuming inspections in the field
- Provides UL/ULC Listed and Certified exhaust solutions



PURPOSE

- Exhaust duct for pizza or baking oven when surrounded by all non-combustible construction
- Easiest and Fastest joint assembly on the market using innovative and industry first technology
- No vee bands means faster and easier installations
- Due to the unique joint design, every pipe length can be cut-to-fit in the field
- Can complete any project with 48" long pipe lengths
- Assurance of finest quality and reliability
- Quick and easy inspections

UL AND ULC LISTINGS

1. UL-1978 Standard, Grease Duct (ULC-S662 Standard for Factory-Built Grease Ducts)
2. UL-103 Standard, Building Heating Appliance Chimney
3. Additional UL/ULC 20" W.C. Pressure Listing

MATERIALS

- Made of high-grade stainless steel
- All supports and accessories are stainless steel

CONNECTION/INSTALLATION DETAILS

2.2" overlapping joint with Patent-Pending light-weight technology, and double female socket permitting fastest alignment/installation on the market

1. Use supplied silicone sealant to make the complete seal
2. Push the male/female ends together
3. Install the single-screw locking band

FEATURES

- Only 1/16" per foot slope is required
- Factory CAD designs for installation ease
- All lengths are field cuttable for maximum flexibility
- 100% Stainless Steel with Limited Lifetime Warranty
- Overlapping high pressure joints
- Smooth flow and known resistance for perfected factory pressure calculations



TECHNICAL DATA SHEET

Single Wall Commercial Exhaust

SWCK-C

PRODUCT LINE

SWCK - Single Wall Commercial Exhaust

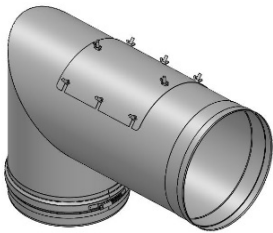
SPECIFICATIONS



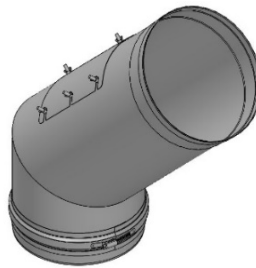
Diameters	6", 8", 10", & 12"
Available Lengths	24" & 48" (cut to length in the field)
Available Fittings	45° & 87° elbows, with and without access panels
Available Accessories	Outlet connector, supports, guides, flashings, and rain cap

SMART FITTINGS & ACCESSORIES

See Submittal Record for complete list of items available.



87EA 87-Deg Elbow
w/ Access



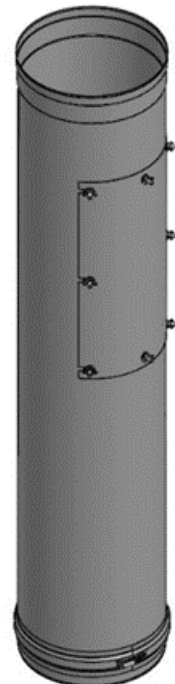
45EA 45-Deg Elbow
w/ Access



FCS Flange Collar
Start w/ VB Vee Band



24L 24" Pipe Length



IAD 48" Pipe Length
w/ Inline Access Door

