

# Technical Data Sheet

## Double Wall Special Gas Vent

### DWGV

#### Product Line

DWGV - Double Wall Special Gas Vent



### Applications

Jeremias Special Gas Vent was designed specifically for the condensing boiler market where ease of assembly, overall time invested, and price are the main objectives. The double wall Special Gas Vent in Ø3"-Ø12" uses a gasket to seal the male-to-female connection and is secured by a locking band on the outside. The design changes for Ø14"-Ø48" and uses an overlapping male-to-female joint with an added external ½" rolled flange and V-band connection to secure it. The outer jacket is secured by a locking band.

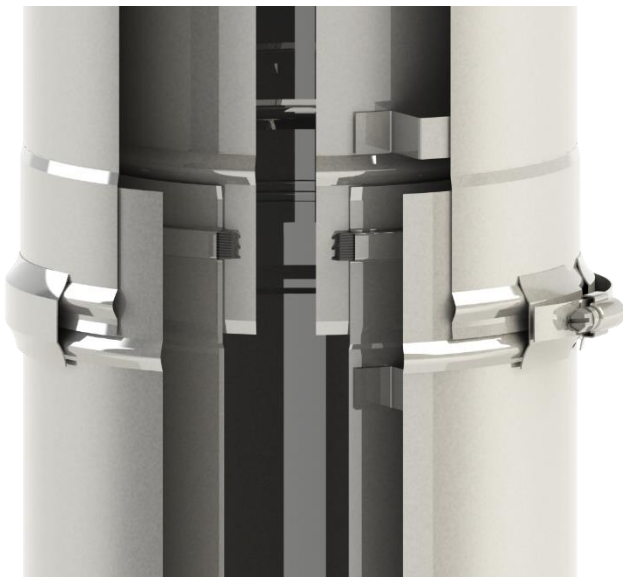
For use with temperatures not exceeding 550°F continuous and pressures not exceeding 20" WC.

### UL & ULC Listings

- UL-1738 Standard, Venting Systems for Gas-Burning Appliances, Categories II, III & IV
- ULC-S636 Standard for Type BH Gas Venting Systems
- Class IIC & IIB - PP (Polypropylene), CPVC, and/or PVC applications at 230°F and/or 194°F maximum flue gas temperatures and zero clearance to combustibles
- UL 441 / ULC-S605 Type B Gas Vent

### Features

- All-stainless steel construction with 25-year warranty
- Assurance of finest quality and reliability
- Quick and easy installation
- Patent Pending field cuttable length (3" through 12" only) for maximum flexibility during installation



### Materials

- Inner Liner made of UL-1738 Listed corrosion resistant high-grade stainless steel
  - 3" through 12" = 0.020" thick 316L or 444 stainless
  - 14" through 36" = 0.035" thick 316L or 444 stainless
  - 38" through 48" = 0.048" thick 316L stainless
- Seal System
  - 3" through 12" = Male-to-female with 3-ribbed gasket
  - 14" through 48" = Siliconed flange protected behind overlapping male-to-female inner
- Insulating Air Space
  - 3" through 12" = 1" insulating air space
  - 14" through 48" = 1.25" insulating air space
- Outer Jacket made of ASTM 304 stainless steel
  - 3" through 12" = 0.020" thick
  - 14" through 24" = 0.025" thick
  - 26" through 48" = 0.035" thick
- All supports and accessories are ASTM 304 stainless steel

### Connection / Installation Details

#### 3" through 12"

Lube the gasket in the female end. Insert the male into the female. Push joint together. Slide Locking Band over beads and tighten. Industry leading 2.28" overlapping joint keeping flue gases away from gasket.

#### 14" through 48"

Apply silicone to the rolled flange. Insert the male into the female. Push joint together. Install and tighten the Vee Band. Slide outer Locking Band over matching grooves and tighten. Industry leading 1.25" overlapping joint keeps flue gases away from the siliconed flange connection.

# Technical Data Sheet

## Double Wall Special Gas Vent

### DWGV

#### Product Line

DWGV - Double Wall Special Gas Vent



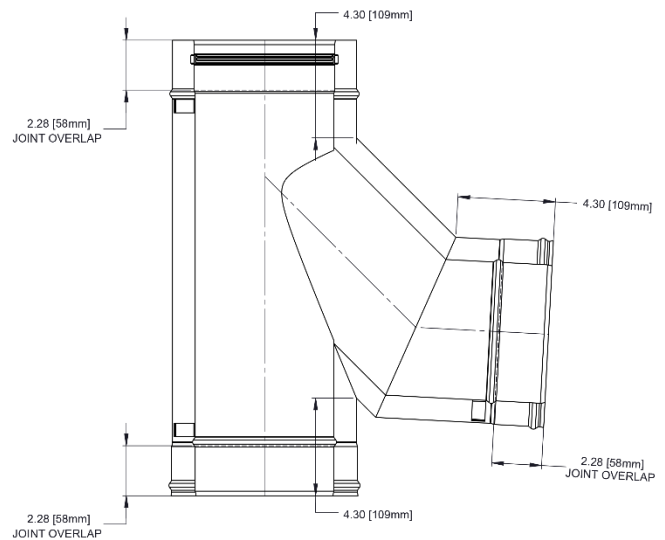
### Product Specifications

#### DWGV - Double Wall Special Gas Vent

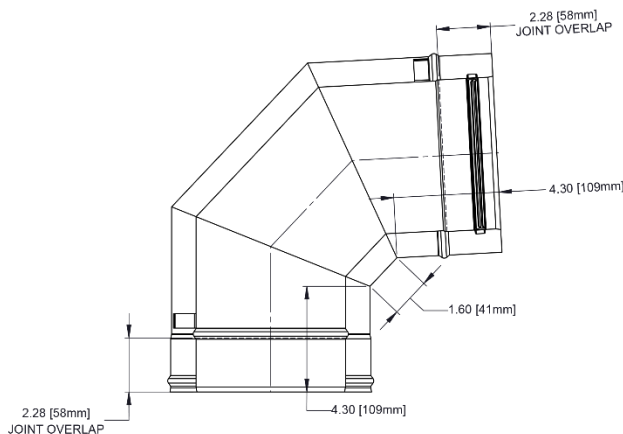
Diameters	3, 4, 5, 6, 7, 8, 9, 10, 12, 14, 16, 18, 20, 22, 24, 26, 28, 30, 32, 34, 36, 38, 40, 42, 44, 46, 48
Available Lengths	9", 12", 18", 24", 30", 36", 42", & 48" (or any fixed length between) *Maximum Length for Ø18" and above is 36"
Available Fittings	Any elbow or tee, over 40 catalog fittings per each diameter
Available Accessories	All-stainless supports, guides, hangers, and adapters - over 20 accessories per each diameter.

### Controlling Dimensions

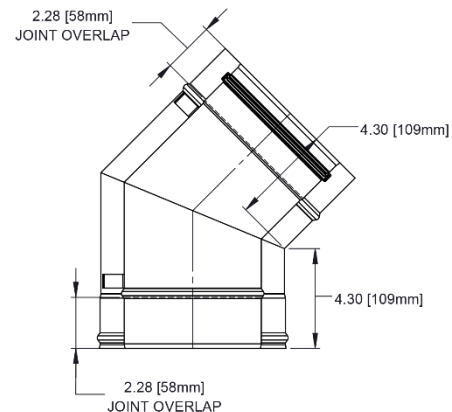
Shows the minimum (and standard) inside gore dimensions for fittings. Use these dimensions when ordering any special or custom part. Jeremias encourages custom built items to provide the best solutions to our customers.



**87° BOOT TEE**



**87° ELBOW**



**45° ELBOW**