

DWFL+1, +2, +3, & +4

PRODUCT LINE

DWFL - All-in-One Exhaust, Chimney, or Vent

PURPOSE

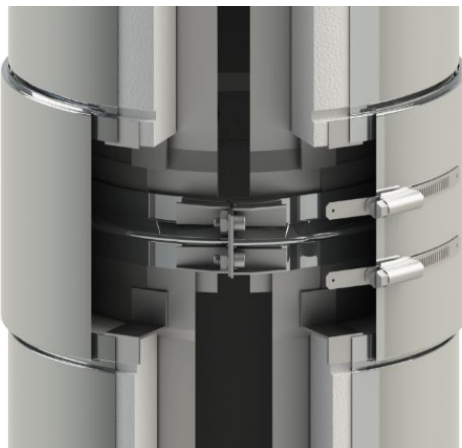
- The fusion of world-class DWKL Conical Exhaust and USA flanged pressure stack systems.
- Only flange system with continuous overlapping inner, as flange is added to outside of inner pipe.
- Most rugged and easiest to install flange system, yet most reliable as the inner overlap protects the silicone seal against condensate and high-pressure washings.

APPLICATIONS

- Stainless steel all-in-one chimney, vent, or exhaust system for condensing and non-condensing appliances, engine and CHP exhaust piping, kitchen exhaust ducts, fireplace chimneys, dryer vents, fume venting, ovens, process stacks, and paint booth exhaust.
- Applicable for all fuels: gas, oil, and solid fuels including wood.

MATERIALS

- Inner liner made of high-grade 316L or 444 stainless steel
 - 6" through 36" = 0.035" thick
 - 38" through 48" = 0.048" thick
- Ceramic Fiber insulation with 1.25", 2.25", 3.25", or 4.25" thick fiber
- Outer jacket made of 304 stainless steel
 - 6" through 24" = 0.025" thick
 - 26" through 48" = 0.035" thick
- All supports and accessories are stainless steel



UL and ULC LISTINGS

1. UL-2561 Standard, 1400F Chimney Listing (ULC/ORD-C959 Industrial Type 760 C Chimney)
2. UL-103 Standard, Building Heating Appliance Chimney (Industrial Type 540°C Chimney)
3. UL-103 Additional Type HT Listing (DWFL+ only)
4. UL-1978 Standard, Grease Duct (ULC-S662 Standard for Factory-Built Grease Ducts)
5. UL-1738 Standard, Venting Systems for Gas-Burning Appliances, Categories II, III & IV (ULC-S636 Standard for Type BH Gas Venting Systems)
6. 90" W.C. Pressure Listing for all Applications

CONNECTION/INSTALLATION DETAILS

- Inner connection is a 1.25" conical overlapping joint with added 1/2" rolled flange and vee band connection
- Supplied sealant is used in the vee band to make seal
- Blanket insulation and outer band competes the joint assembly

FEATURES

- All-stainless with a Limited Lifetime Warranty
- Leak Proof high-pressure joints
- All supports are stainless steel
- Smooth flow and known resistance for perfected factory pressure calculations
- Low and skin-safe temperatures and dramatically reduced clearance to combustible



TECHNICAL DATA SHEET

All-in-One Exhaust, Chimney, or Vent



DWFL+1, +2, +3, & +4



PRODUCT LINE

DWFL - All-in-One Exhaust, Chimney, or Vent

SPECIFICATIONS

| | |
|------------------------------|--|
| Diameters | 6", 7", 8", 9", 10", 11", 12", 13", 14", 16", 18", 20", 22", 24", 26", 28", 30", 32", 34", 36", 38", 40", 42", 44", 46", & 48" |
| Available Lengths | 9", 12", 18", 24", 30", 36", 42", & 48" (or any fixed length between) *Maximum Length for Ø18" and above is 36" |
| Available Fittings | Any elbow or tee, over 80 catalog fittings per each diameter |
| Available Accessories | All-stainless supports, guides, hangers, adapters - over 25 accessories per each diameter |
| Insulation Thickness | DWFL+1 = 1.25" fiber DWFL+2 = 2.25" fiber DWFL+3 = 3.25" fiber DWFL+4 = 4.25" fiber |

CONTROLLING DIMENSIONS

- Shows the minimum (and standard) inside gore dimensions for fittings
- Use these dimensions when ordering any special or custom part
- Jeremias encourages custom built items to provide the best solutions to our customers

