

# Technical Data Sheet

## All-In-One Exhaust, Chimney or Vent

### DWFL

#### Product Line

DWFL – Double Wall Flanged Joint



#### Purpose

The fusion of world class DWFL Conical with USA flanged pressure stack systems.

Only flange system with continuous overlapping inner, as flange is added to outside of inner pipe.

Most rugged and easiest to install flange system, yet most reliable as the inner overlap protects the silicone seal against condensate and high-pressure washings.

#### Applications

All-stainless and fiber insulated chimney or vent for condensing and noncondensing appliances, engine and CHP exhaust piping, kitchen exhaust ducts, fireplace chimneys, dryer vents, fume venting, ovens, process stacks, and paint booth exhaust.

Applicable for all fuels: gas, oil, and solid fuels including wood.

#### Materials

- Inner liner made of high-grade 444 or 316L stainless steel (316L for Ø38"- Ø48")
  - 6" through 36" = 0.035" thick
  - 38" through 48" = 0.048" thick
- Air or ceramic fiber insulation at:
  - 1.25" Air, 1.25", 2.25", 3.25", or 4.25" thick fiber
- Outer jacket made of 304 stainless steel
  - 6" through 24" = 0.025" thick
  - 26" through 48" = 0.035" thick
- All supports and accessories are 304 stainless steel



#### UL Listings (and ULC)

- UL-2561 Standard, 1400F Chimney Listing (ULC/ORD-C959 Industrial Type 760 C Chimney) (Ø6"-Ø36" Only)
- UL-103 Standard, Building Heating Appliance Chimney (Industrial Type 540°C Chimney)
- UL-103 Additional Type HT Listing (DWFL+ only) (Ø6"-Ø36" Only)
- UL-1978 Standard, Grease Duct (ULC-S662 Standard for Factory-Built Grease Ducts)
- UL-1738 Standard, Venting Systems for Gas-Burning Appliances, Categories II, III & IV (ULC-S636 Standard for Type BH Gas Venting Systems)

#### Connection / Installation Details

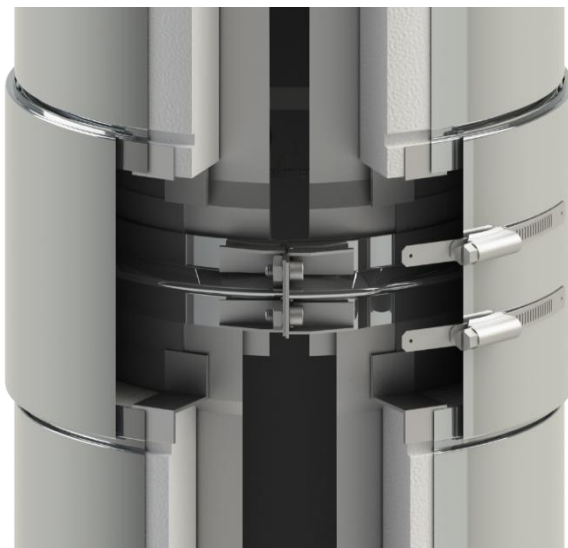
Inner connection is a 1.25" conical overlapping joint with added ½" rolled flange and vee band connection.

Supplied sealant is used in the vee band to make seal.

Blanket insulation and outer band completes the joint assembly.

#### Features

- Extremely rigid and made of all-stainless steel with 25-year warranty.
- Leak proof high pressure joints.
- All supports are stainless steel.
- Smooth flow and known resistance for accurate factory pressure calculations.
- Low and man-safe skin temperatures and dramatically reduced clearance to combustibles.



# Technical Data Sheet

## All-In-One Exhaust, Chimney or Vent

### DWFL

#### Product Line

DWFL - Double Wall Flanged Joint



### Product Specifications

#### DWFL - Double Wall Flanged/Conical Joining

Diameters	6, 7, 8, 9, 10, 11, 12, 13, 14, 16, 18, 20, 22, 24, 26, 28, 30, 32, 34, 36, 38, 40, 42, 44, 46, 48
Available Lengths	9", 12", 18", 24", 30", 36", 42", & 48" (or any fixed length in between) *Maximum Length for Ø18" and above is 36"
Available Fittings	Any elbow or tee, over 80 catalog fittings per diameter
Available Accessories	All-stainless supports, guides, hangers, adapters, over 25 accessories per diameter
Insulation Thickness	DWFL = 1.25" air space DWFL+1 = 1.25" fiber DWFL+2 = 2.25" fiber DWFL+3 = 3.25" fiber DWFL+4 = 4.25" fiber

### Controlling Dimensions

Shown are the minimum (and standard) inside gore dimensions for fittings. Use these dimensions when ordering any special or custom part. Jeremias encourages custom built items to provide the best solutions to our customers.

