

# Technical Data Sheet

## DWFL-ZC Zero Clearance Grease Duct

### DWFL-ZC

#### Product Line

DWFL-ZC UL-2221 Zero Clearance & Fire Rated Grease Duct



#### Purpose

Provides 2-hour fire rated shaft and zero clearance duct assembly.

Factory built eliminates welding in the field.

Factory-Built assurance of finest quality and reliability.

Factory insulated allows for single trade installation.

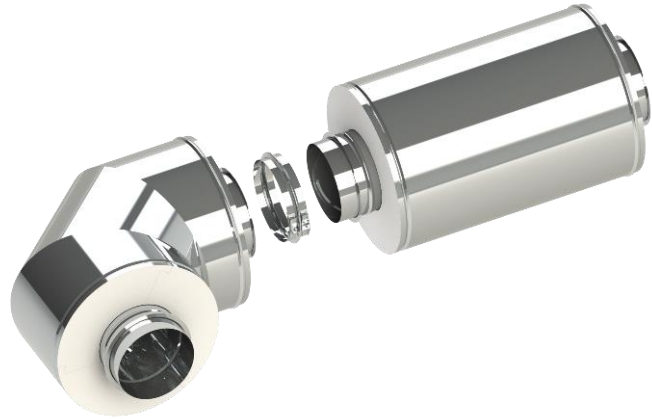
#### Applications

Stainless steel and factory insulated zero clearance and fire rated duct assembly for Kitchen Ventilation Systems.

Eliminates the need for fire dampers in HVAC ducts, laundry, and fume venting applications.

#### UL Listings (and ULC)

- UL-2221 Standard, Fire Resistive Grease Duct Enclosure Assemblies (Ø6"-Ø36" Only)
- UL-1978 Standard, Grease Duct (ULC-S662 Standard for Factory-Built Grease Ducts)
- 90" W.C. Pressure Listing for all Applications



#### Materials

- Inner liner made of high-grade stainless steel.
  - 6" through 36" = 0.035" thick
  - 38" through 48" = 0.048" thick
- 3.25" thick compressed ceramic fiber insulation
- Outer jacket made of ASTM 304 stainless steel
  - 6" through 24" = 0.025" thick
  - 26" through 48" = 0.035" thick
- All supports and accessories are ASTM 304 stainless steel

#### Connection / Installation Details

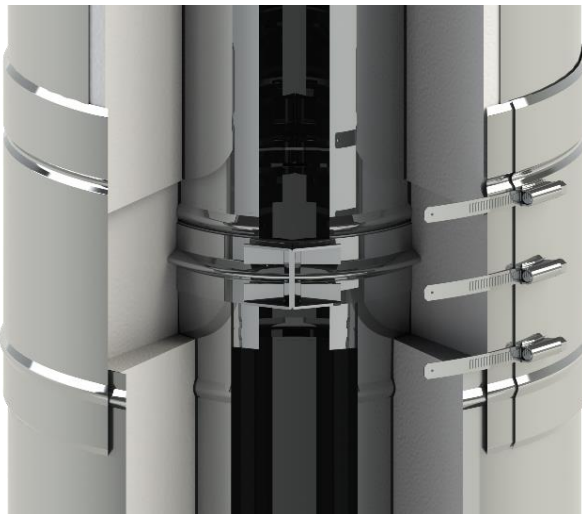
Inner connection is a 1.25" overlapping joint with added ½" rolled flange and vee band connection.

Supplied sealant is used in the vee band to make seal.

Blanket insulation and outer locking band completes the joint assembly.

#### Features

- Extremely rigid made of all-stainless steel with 25-year warranty.
- Leak proof high-pressure joints.
- Smooth flow and known resistance for perfected factory pressure calculations.
- Zero clearance and 2-hour fire rated eliminates the requirements for an additional fire rated shaft. (Ø6"-Ø36" Only)



# Technical Data Sheet

## DWFL-ZC Zero Clearance Grease Duct

### DWFL-ZC

#### Product Line

DWFL-ZC UL-2221 Zero Clearance & Fire Rated Grease Duct



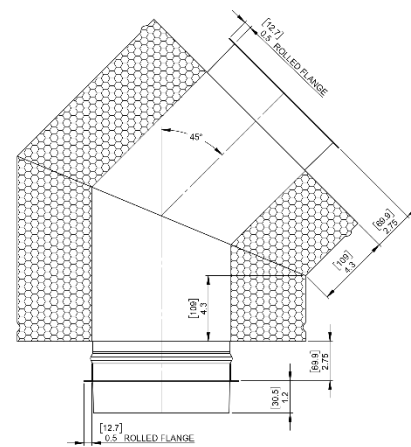
### Product Specifications

#### DWFL - Zero Clearance & Fire Rated Grease Duct

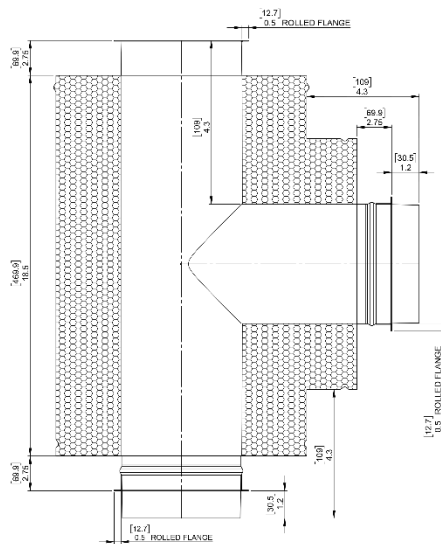
Diameters	6, 7, 8, 9, 10, 11, 12, 13, 14, 16, 18, 20, 22, 24, 26, 28, 30, 32, 34, 36, 38, 40, 42, 44, 46, 48
Available Lengths	9", 12", 18", 24", 30", 36", 42", & 48" (or any fixed length between) *Maximum Length for Ø18" and above is 36"
Available Fittings	Any elbow or tee, over 80 catalog fittings per diameter
Available Accessories	All-stainless supports, guides, hangers, and adapters - over 25 accessories per diameter

### Controlling Dimensions

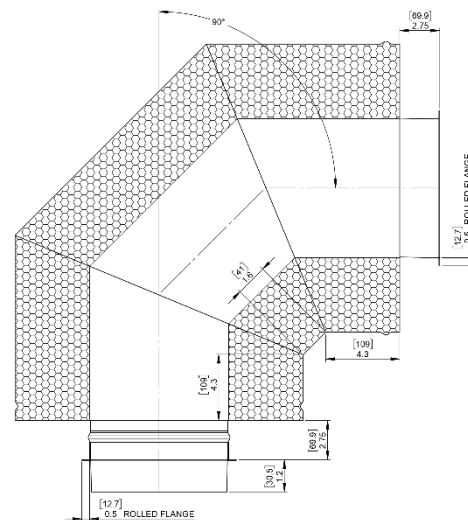
Shown are the minimum (and standard) inside gore dimensions for fittings. Use these dimensions when ordering any special or custom part. Jeremias encourages custom built items to provide the best solutions to our customers.



**45° ELBOW**



**90° TEE**



**90° ELBOW**