

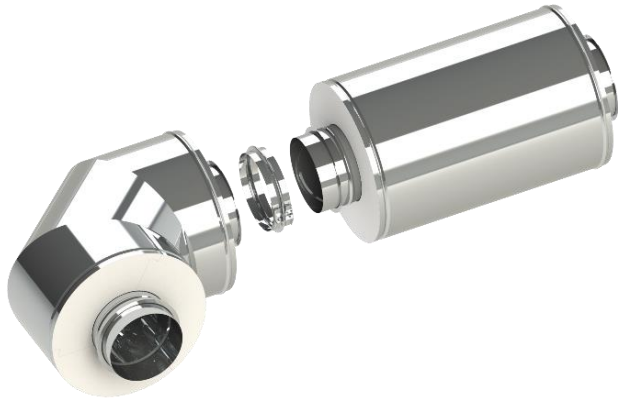
# Technical Data Sheet

## DWFL-ZC Zero Clearance Gas Vent

### DWFL-ZC

#### Product Line

DWFL-ZC Zero Clearance & Fire-Rated Special Gas Vent



#### Purpose

Provides two-hour fire rated shaft and zero clearance duct assembly.

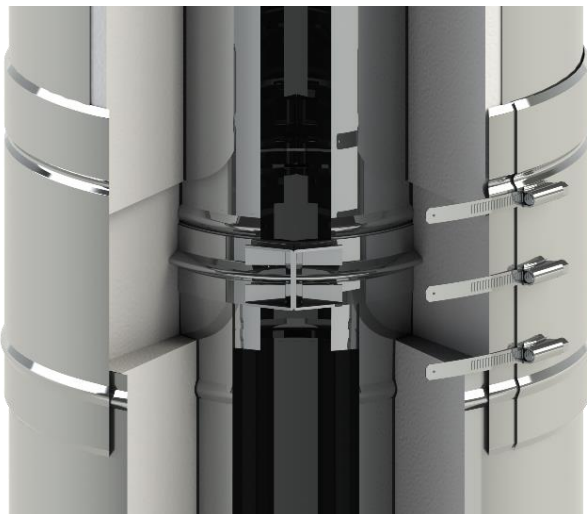
Factory built eliminates welding in the field.

Factory insulated allows for single trade installation.

#### Applications

Stainless steel and factory-insulated zero clearance and fire-rated duct assembly for special gas vent.

For use as gas vents, laundry exhausts, make-up air ducts, dryer exhausts, fume venting, HVAC ductwork, and other exhaust systems.



#### UL Listings (and ULC)

- UL-1738 Standard, Venting Systems for Gas-Burning Appliances, Categories II, III & IV (ULC-S636 Standard for Type BH Gas Venting Systems)
- UL-2221 Standard, Fire Resistant Grease Duct Enclosure Assemblies (Ø6"-Ø36" Only)
- UL-1978 Standard, Grease Duct (ULC-S662 Standard for Factory-Built Grease Ducts)
- UL-441 Standard, Gas Vents (ULC-S605 Standard for Gas Vents)
- 90" W.C. Pressure Listing for All Applications

#### Materials

- Inner liner made of high-grade ASTM 444 stainless steel
  - 6" through 36" = 0.035" thick
- Inner liner made of high-grade ASTM 316L stainless steel
  - 38" through 48" = 0.048" thick
- 3.25" thick compressed ceramic fiber insulation
- Outer jacket made of ASTM 304 stainless steel
  - 6" through 24" = 0.025" thick
  - 26" through 48" = 0.035" thick

#### Connection / Installation Details

Inner connection is a 1.25" overlapping joint with ½" rolled flange and vee band connection.

Supplied sealant is used in the vee band to make seal.

Blanket insulation and outer locking band completes the joint assembly.

#### Features

- Eliminates the need for fire dampers in HVAC ducts and fume venting applications.
- Extremely rigid and made of all stainless steel with 25-year warranty.
- Leak proof high-pressure joints.
- Smooth flow and known resistance for accurate factory pressure calculations.
- Zero clearance and two-hour fire rated eliminates the requirements for an additional fire rated shaft. (Ø6"-Ø36" Only)

# Technical Data Sheet

## DWFL-ZC Zero Clearance Gas Vent

### DWFL-ZC

Product Line

DWFL-ZC Zero Clearance & Fire-Rated Special Gas Vent



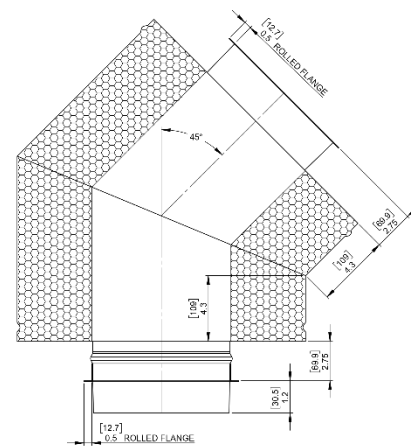
### Product Specifications

#### DWFL - Zero Clearance & Fire Rated Special Gas Vent

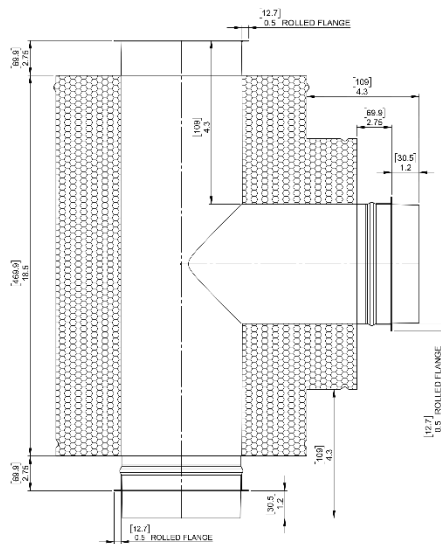
Diameters	6, 7, 8, 9, 10, 11, 12, 13, 14, 16, 18, 20, 22, 24, 26, 28, 30, 32, 34, 36, 38, 40, 42, 44, 46, 48
Available Lengths	9", 12", 18", 24", 30", 36", 42", & 48" (or any fixed length between) *Maximum Length for Ø18" and above is 36"
Available Fittings	Any elbow or tee, over 80 catalog fittings per diameter
Available Accessories	All-stainless supports, guides, hangers, and adapters - over 25 accessories per diameter

### Controlling Dimensions

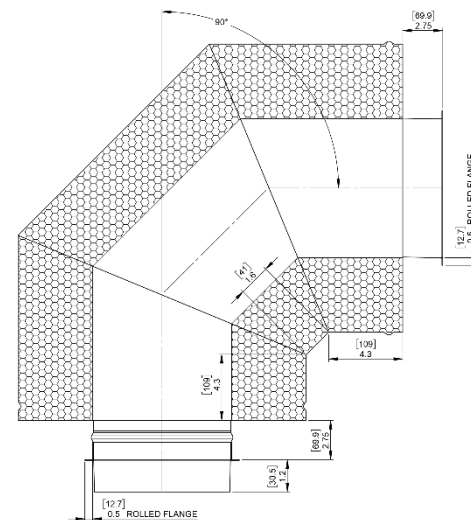
Shown are the minimum (and standard) inside gore dimensions for fittings. Use these dimensions when ordering any special or custom part. Jeremias encourages custom built items to provide the best solutions to our customers.



**45° ELBOW**



**90° TEE**



**90° ELBOW**