

TECHNICAL DATA SHEET

Fire-Rated Engine Exhaust

DWFL-ZC

PRODUCT LINE

DWFL-ZC – Fire-Rated Engine Exhaust



PURPOSE

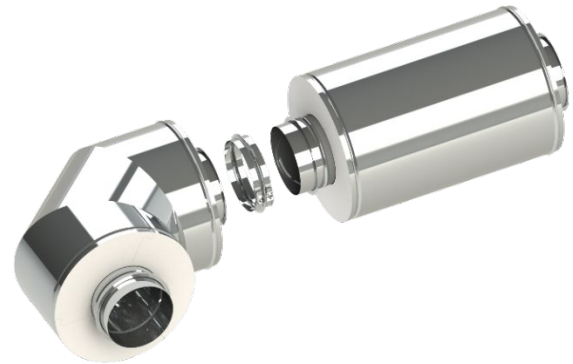
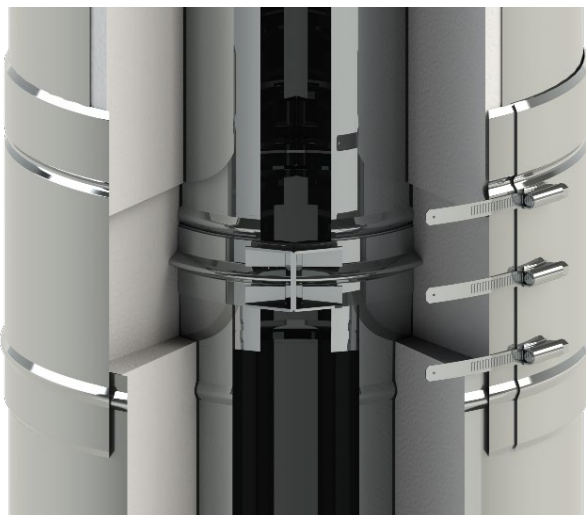
- Provides 2-hour fire rated shaft
- Factory-built venting eliminates welding in the field
- Factory-built assurance of finest quality and reliability
- Factory-inserted insulation allows for single trade insulation

APPLICATIONS

- Stainless steel, factory insulated, zero clearance, and fire-rated duct assembly for condensing and noncondensing appliances, engine exhaust, and CHP exhaust piping

MATERIALS

- Inner liner made of high-grade 316L or 444 stainless steel
 - 6" through 36" = 0.035" thick
- 3.25" thick compressed ceramic fiber insulation
- Outer jacket made of stainless steel
 - 6" through 24" = 0.025" thick
 - 26" through 36" = 0.035" thick
- All supports and accessories are stainless steel



UL and ULC LISTINGS

1. ISO 6944-1:2008 Fire Containment - Elements of Building Construction
2. UL 1479 Standard for Fire Tests of Penetration Firestops
3. UL-103 Standard, Standard for Factory-Built Chimneys and Building Heating Appliances
4. UL-2561 Standard, 1400F Chimney Listing / ULC/ORD-C959 Industrial Type 760°C Chimney
5. UL-1738 Standard, Venting Systems for Gas-Burning Appliances
6. 90" W.C. Pressure Listing for all Applications

Note: The UL Standards are not harmonized, and each listing is for a specific application. The use of these ISO 6944 ducts with exhaust engines was determined by Jeremias and not the opinion of UL

CONNECTION/INSTALLATION DETAILS

- Inner connection is a 1.25" conical overlapping joint with added 1/2" rolled flange and vee band connection
- Supplied sealant is used in the vee band to make seal
- Blanket insulation and outer band competes the joint assembly

FEATURES

- All-stainless with a Limited Lifetime Warranty
- Leak Proof high-pressure joints
- All supports are stainless steel
- Smooth flow and known resistance for perfected factory pressure calculations
- 2-hour fire-rated to eliminate the requirements for an additional fire rated shaft



TECHNICAL DATA SHEET

Fire-Rated Engine Exhaust

DWFL-ZC



PRODUCT LINE

DWFL-ZC – Fire-Rated Engine Exhaust

SPECIFICATIONS

Diameters	6", 7", 8", 9", 10", 11", 12", 13", 14", 16", 18", 20", 22", 24", 26", 28", 30", 32", 34", & 36"
Available Lengths	9", 12", 18", 24", 30", 36", 42", & 48" (or any fixed length between) *Maximum Length for 18" and above is 36"
Available Fittings	Any elbow or tee, over 80 catalog fittings per each diameter
Available Accessories	All-stainless supports, guides, hangers, adapters – over 25 accessories per each diameter

CONTROLLING DIMENSIONS

- Shows the minimum (and standard) inside gore dimensions for fittings
- Use these dimensions when ordering any special or custom part
- Jeremias encourages custom built items to provide the best solutions to our customers

