

DWFL-Mf

PRODUCT LINE

DWFL-Mf - All-in-One Exhaust, Chimney, or Vent

PURPOSE

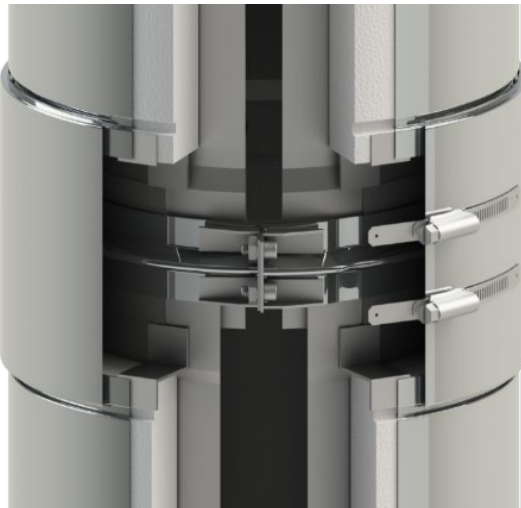
- The fusion of world-class DWKL Conical Exhaust and USA flanged pressure stack systems.
- Only flange system with continuous overlapping inner, as flange is added to outside of inner pipe.
- Most rugged and easiest to install flange system, yet most reliable as the inner overlap protects the silicone seal against condensate and high-pressure washings.

APPLICATIONS

- Stainless steel all-in-one chimney, vent, or exhaust system for condensing and non-condensing appliances, engine and CHP exhaust piping, kitchen exhaust ducts, fireplace chimneys, dryer vents, fume venting, ovens, process stacks, and paint booth exhaust.
- Applicable for all fuels: gas, oil, and solid fuels including wood.

MATERIALS

- Inner liner made of high-grade 316L or 444 stainless steel
 - 6" through 36" = 0.035" thick
 - 38" through 48" = 0.048" thick
- Mineral Fiber insulation with 1.25", 2.25", 3.25", or 4.25" thick fiber
- Outer jacket made of 304 stainless steel
 - 6" through 24" = 0.025" thick
 - 26" through 48" = 0.035" thick
- All supports and accessories are stainless steel



UL and ULC LISTINGS

1. UL-103 Standard, Building Heating Appliance Chimney (Industrial Type 540°C Chimney)
2. UL-1738 Standard, Venting Systems for Gas-Burning Appliances, Categories II, III & IV (ULC-S636 Standard for Type BH Gas Venting Systems)
3. 90" W.C. Pressure Listing for all Applications

CONNECTION/INSTALLATION DETAILS

- Inner connection is a 1.25" conical overlapping joint with added 1/2" rolled flange and vee band connection
- Supplied sealant is used in the vee band to make seal
- Blanket insulation and outer band competes the joint assembly

FEATURES

- All-stainless with a Limited Lifetime Warranty
- Leak Proof high-pressure joints
- All supports are stainless steel
- Smooth flow and known resistance for perfected factory pressure calculations
- Low and skin-safe temperatures and dramatically reduced clearance to combustible



TECHNICAL DATA SHEET

All-in-One Exhaust, Chimney, or Vent

DWFL-Mf



PRODUCT LINE

DWFL-Mf - All-in-One Exhaust, Chimney, or Vent

SPECIFICATIONS

Diameters	6", 7", 8", 9", 10", 11", 12", 13", 14", 16", 18", 20", 22", 24", 26", 28", 30", 32", 34", 36", 38", 40", 42", 44", 46", & 48"
Available Lengths	9", 12", 18", 24", 30", 36", 42", & 48" (or any fixed length between) *Maximum Length for Ø18" and above is 36"
Available Fittings	Any elbow or tee, over 80 catalog fittings per each diameter
Available Accessories	All-stainless supports, guides, hangers, adapters - over 25 accessories per each diameter
Insulation Thickness	DWFL+1 = 1.25" fiber DWFL+2 = 2.25" fiber DWFL+3 = 3.25" fiber DWFL+4 = 4.25" fiber

CONTROLLING DIMENSIONS

- Shows the minimum (and standard) inside gore dimensions for fittings
- Use these dimensions when ordering any special or custom part
- Jeremias encourages custom built items to provide the best solutions to our customers

