

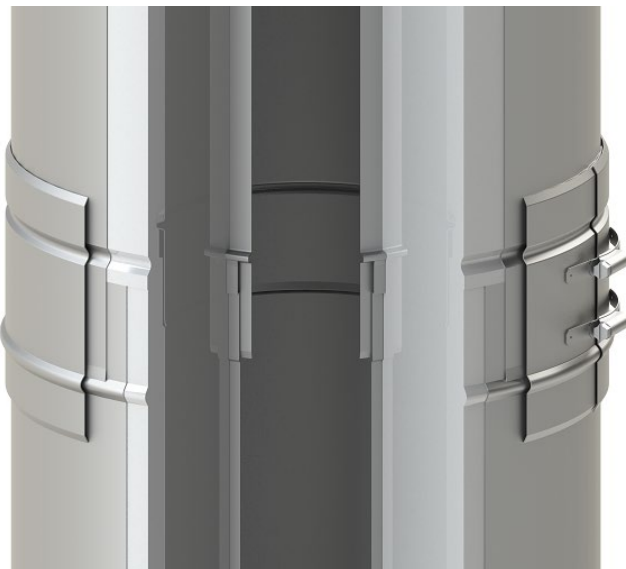
DWCK-ZC

PRODUCT LINE

DWCK-ZC - Double Wall Commercial Kitchen Exhaust

APPLICATIONS

- Stainless Steel Duct for connecting cooking appliances and kitchen hoods to the outdoors under negative or positive pressure
- Design eliminates welding, second insulation trade, third trade for a fire-rated shaft, and all the lengthy inspections in the field
- Provides UL/ULC Listed and Certified all-in-one exhaust solutions



PURPOSE

- Factory-built exhaust eliminates welding, insulation, and building a fire-rated shaft in the field
- Easiest and fastest joint assembly on the market using innovative and industry first technology
- No vee bands means faster and easier installations
- Due to the unique joint design, every pipe length can be cut-to-fit in the field
- Can complete any project with 48" long pipe lengths
- Cut Lengths with a clamshell outer jacket are offered to make it easier on installers
- Assurance of finest quality and reliability
- Quick and easy inspections

UL AND ULC LISTINGS

1. UL-1978 Standard, Grease Duct (ULC-S662 Standard for Factory-Built Grease Ducts)
2. UL-2221 Standard, Fire Resistive Grease Duct Enclosure Assemblies
3. Additional UL/ULC 20" W.C. Pressure Listing

MATERIALS

- Inner and outer jacket are stainless steel
 - Outer Jacket is 0.035" thick for all diameters
- 3 1/4" thick high-density ceramic fiber insulation
- All supports and accessories are stainless steel

CONNECTION/INSTALLATION DETAILS

2.2" overlapping joint with Patent-Pending light-weight technology, and double female socket permitting fastest alignment/installation on the market

1. Use supplied silicone sealant to make the complete seal
2. Push the male/female ends together
3. Install the locking band to ensure correct engagement

FEATURES

- All-in-one grease duct and 2-hour fire-rated shaft/enclosure assembly
- Only 1/16" per foot slope is required
- Factory CAD designs for installation ease
- All lengths are field cuttable for maximum flexibility
- 100% stainless steel with Limited Lifetime Warranty
- Smooth flow and known resistance for perfected factory pressure calculations



DWCK-ZC



PRODUCT LINE

DWCK-ZC - Double Wall Commercial Kitchen Exhaust

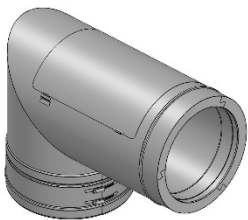
SPECIFICATIONS

Diameters	6", 7", 8", 9", 10", 11", 12", 13", 14", 16", 18", 20", 22", 24", 26", 28", 30", 32", 34", & 36" (Use model DWFL-ZC for diameters 38" through 48")
Available Lengths	9", 12", 18", 24", 30", & 36" (or any fixed length between)
Available Fittings	Any elbow or tee, over 80 catalog fittings per diameter
Available Accessories	All-stainless supports, guides, hangers, & adapters - over 25 accessories per diameter

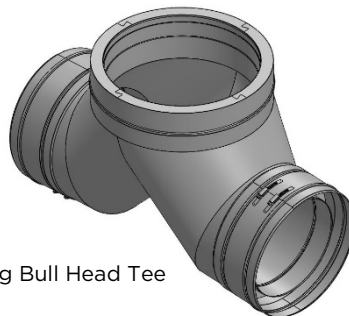
SMART FITTINGS & ACCESSORIES

Besides the smart cut-to-fit technology, Jeremias uses smart fittings and accessories specifically designed for grease ducts. These include:

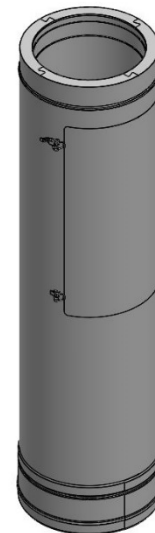
- 87° elbow with built-in access panel
- 45° elbow with built-in access panel
- Common wye with reduction branches
- No-weld hood connections



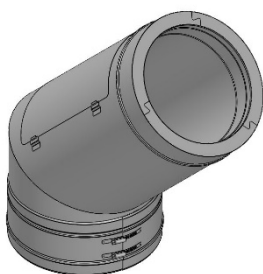
87-Degree Elbow with Access



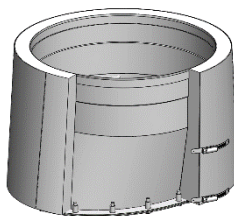
Increasing Bull Head Tee



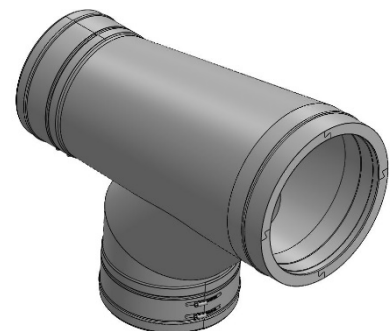
In Line Access Length



45-Degree Elbow with Access



No-Weld Hood Adapter



Increasing Boot Tee

