

## DWCK-FW

### PRODUCT LINE

DWCK-FW - Double Wall Commercial Kitchen Exhaust



### APPLICATIONS

- Stainless steel duct for connecting cooking appliances and kitchen hoods to the outdoors under negative or positive pressure
- Design uses easy-to-install and lightweight DWCK+1 and permits a single layer of field-applied fire wrap to achieve a UL Listed Grease Duct and ASTM E 2336 fire rated enclosure and a Certified all-in-one Exhaust Solution

### UL AND ULC LISTINGS

1. UL-1978 Standard, Grease Duct (ULC-S662 Standard for Factory-Built Grease Ducts)
2. Additional UL/ULC 20" W.C. Pressure Listing
3. ASTM E 2336 Fire Resistive Grease Duct Enclosure Systems

### PURPOSE

- Factory-built exhaust eliminates welding and building a fire-rated shaft in the field
- Easiest and Fastest joint assembly on the market using innovative and industry first technology
- No vee bands means faster and easier installation
- Due to the unique joint design, every pipe length can be cut-to-fit in the field
- Can complete any project with 48" long pipe lengths
- Cut Lengths with a clamshell outer jacket are offered to make it easier on installers
- Assurance of finest quality and reliability



### APPLICABLE FIRE WRAPS

- DWCK+1 with ceramic fiber by **Nutec** - use **3M Fire Barrier Duct Wrap 615+**
- DWCK+1 with ceramic fiber by **Thermal Ceramics** - use **FireMaster FastWrap XL**
- DWCK+1 with ceramic fiber by **Unifrax** - use **FyreWrap Elite**

In all cases, this takes advantage of the 1 ½" thick 8 PCF ceramic fiber blanket inside that is compressed down to 1 ¼" space. All anchor supports on Listed Grease Ducts extend 3" out from outer jacket. This permits installing/hanging Grease Duct to the building and then adding the Fire Wrap



### DWCK-FW



#### PRODUCT LINE

DWCK-FW - Double Wall Commercial Kitchen Exhaust

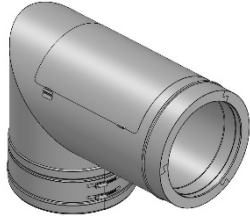
#### SPECIFICATIONS

<b>Diameters</b>	6", 7", 8", 9", 10", 11", 12", 13", 14", 16", 18", 20", 22", 24", 26", 28", 30", 32", 34", & 36" (Use DWFL-ZC for diameters 38" through 48")
<b>Available Lengths</b>	9", 12", 18", 24", 30", 36", 42", & 48" (or any fixed length between)
<b>Available Fittings</b>	Any elbow or tee, over 80 catalog fittings per diameter
<b>Available Accessories</b>	All-stainless supports, guides, hangers, & adapters - over 25 accessories per diameter

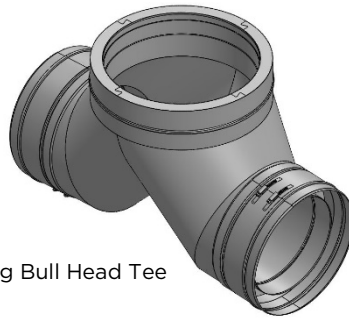
#### SMART FITTINGS & ACCESSORIES

Besides the smart cut-to-fit technology, Jeremias uses smart fittings and accessories specifically designed for grease ducts. These include:

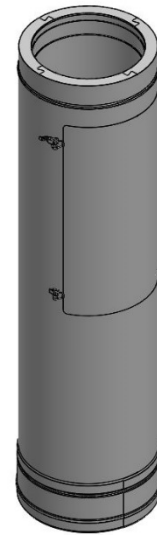
- 87° elbow with built-in access panel
- 45° elbow with built-in access panel
- Common wye with reduction branches
- No-weld hood connections



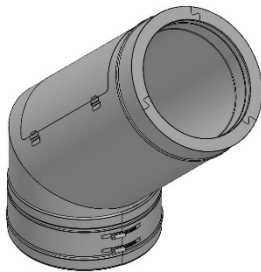
87-Degree Elbow with Access



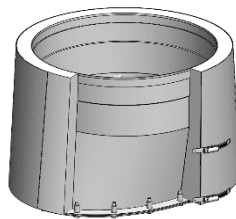
Increasing Bull Head Tee



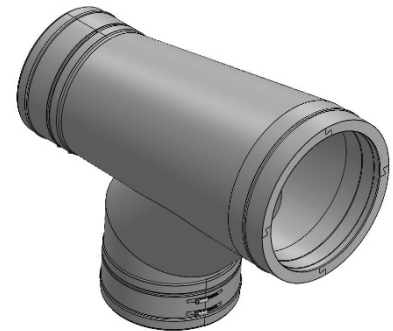
In Line Access Length



45-Degree Elbow with Access



No-Weld Hood Adapter



Increasing Boot Tee

