

# TECHNICAL DATA SHEET

## Double Wall All Fuel Exhaust System

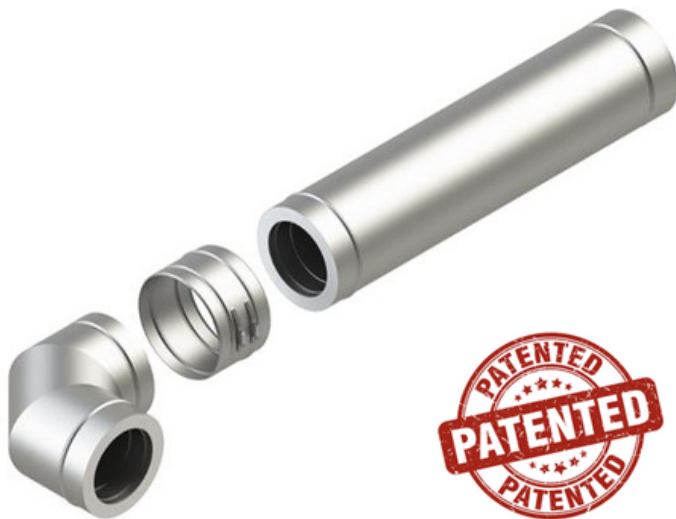
### DWAF

#### PRODUCT LINE

DWAF - Double Wall All Fuel Exhaust System

#### APPLICATIONS

- All stainless-steel double wall chimney and grease duct system for pizza ovens, boilers, cooking ovens, or appliances that do not exceed 1400°F flue gas temperatures continuously
- For connecting heating appliances to the outdoors under negative or positive vent pressure



#### PURPOSE

- Double wall provides reduced clearance to combustibles
- Easiest and fastest joint assembly on the market using innovative and industry-first technology
- No vee bands means faster and easier installation

#### UL AND ULC LISTINGS

1. UL-1978 Standard, Grease Duct (ULC-S662 Standard for Factory-Built Grease Ducts)
2. UL-103 Standard, Building Heating Appliance Chimney (ULC/ORD-C959 Industrial Type 540°C Chimney)
3. UL-103 Standard, Additional Type HT Listing
4. UL-2561 Standard, 1400°F Chimney Listing (ULC/ORD-C959 Industrial Type 760°C Chimney)
5. Additional UL/ULC 20" W.C. Pressure Listing

#### MATERIALS

- 444 or 316L stainless-steel inner liner
- 304 stainless-steel outer jacket
- 1 ½" thick ceramic fiber insulation compressed into 1 ¼" space
- All supports and accessories are stainless steel

#### CONNECTION/INSTALLATION DETAILS

2.2" overlapping joint with Patent-Pending light-weight technology, and double female socket permitting fastest alignment/installation on the market

1. Use supplied silicone sealant to make the complete seal
2. Push the male/female ends together
3. Install the single-screw locking band

#### FEATURES

- Factory CAD designs for installation ease
- All lengths are field-cuttable for maximum flexibility
- 100% Stainless Steel with a Limited Lifetime Warranty



### DWAF



#### PRODUCT LINE

DWAF - Double Wall All Fuel Exhaust System

#### SPECIFICATIONS

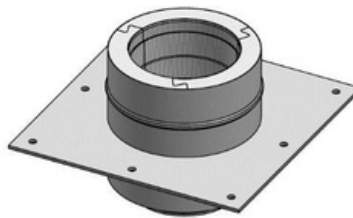
Diameters	6", 8", 10", & 12"
Available Lengths	24" & 48" fixed pipe lengths, 24CL & 48CL field cuttable pipe lengths
Available Fittings	45° & 87° elbows, with and without access panels
Available Accessories	Outlet connector, supports, guides, thimbles, flashings, and rain cap

#### SMART FITTINGS & ACCESSORIES

See Submittal Record for complete list of items available.



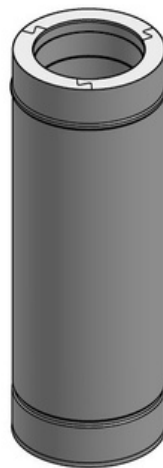
45EA 45-Deg Elbow w/ Access



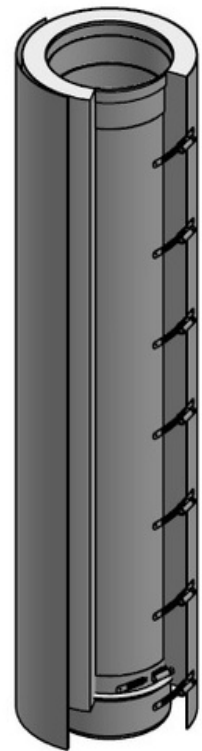
APS Anchor Plate Support



FCS Flange Collar Start w/ VB Vee Band



24L 24" Pipe Length



48CL 48" Cutable Pipe Length

